

WEC

GROUP



CCTV POLES & STRUCTURES, DESIGNED & MANUFACTURED IN THE UNITED KINGDOM

Supplying camera mounting solutions for over 40 years to the following sectors:

- Government
- Leisure & Tourism
- Oil & Gas
- Airports & Harbours
- Private Energy & Utilities
- Petrochemical



intersec

EXPORT 2024

INTRODUCTION

WEC Group Limited understands the demand for specific CCTV installation expertise in the global markets. We have a dedicated Export Division understanding overseas installations and offering support from initial tender stage until project completion including supporting design documentation, full export documentation and shipping management.

Our range of CCTV Towers and associated bracketry has been specifically designed for use within the Petrochemical and Gas Industries. We have over 40 years of expertise in the design, production and manufacturing of CCTV mounting structures supplying to some of the world's leaders of CCTV Installations.

For all your CCTV Structure requirements please contact WEC's camera mounting division direct in the United Kingdom on: +44 (0)1254 700200 or email: cctvexport@wecl.co.uk



EXPORT

The WEC CCTV Export division specialises in the requirements and logistical processes for overseas installations.

LOGISTICS

Full logistic solutions available covering every region of the world by all modes of transport whether your requirements are by land, sea, air or multimodal. WEC offers a professional service from origin to the final destination.

SERVICE

We strive to offer an unparalleled level of service from initial design to completion. Many of our customers have developed their portfolios with the assistance of our services and expertise.



**FAST QUOTATION
TURNAROUND WITH
THE MAJORITY OF
PRODUCTS AVAILABLE
FROM STOCK**



**DESIGNED AND
MANUFACTURED IN
THE UNITED KINGDOM.**

WDT RANGE

SPECIFICATIONS

- Standard 101.6mm PCD fixing can be modified on request.
- Bolt down version using a template and bolt set.
- Built in cable entry and exit points.
- Standard heights of 4, 6, 8 and 10 metres. Other heights available on request.
- Compatible with WEC adaptors, accessories and anti-climb brackets.

STANDARDS

Structural Steelwork:

BS EN 10210-1:1994,
BS EN 10210-2:1997

General Steelwork: BS1449:1991, BS1387:1985,
BS EN 10025:1993

Hot Dipped Galvanised:

BS EN ISO 1461:2009

Welding Procedures: Comply with BS EN 1011-2:2001

Fasteners: Grade 8.8

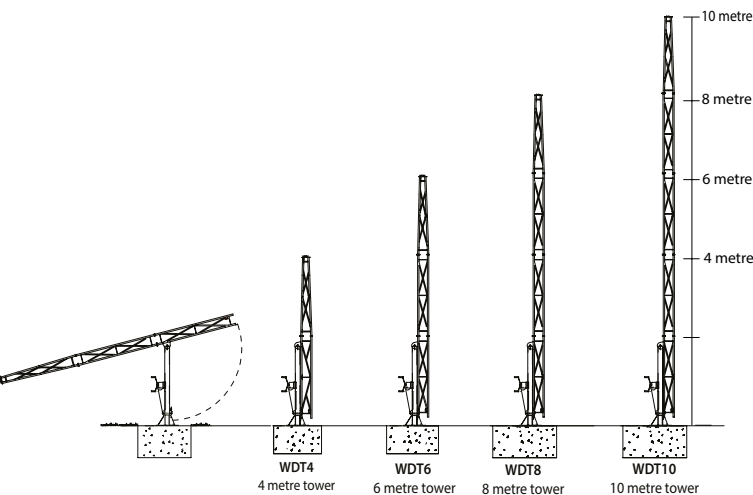
BS3692:2001, BS4190:2001,
DIN931, DIN934

Design Wind Loading:

In accordance with CP3 chapter V Pt 2 & BS 6399 Pt 2:1997

Paint Finishes: BS4800 and RAL colour range

TECHNICAL SPECIFICATION



MODEL REFERENCE

WDT4 - 4 metre tower **WDT6** - 6 metre tower
WDT8 - 8 metre tower **WDT10** - 10 metre tower

WD RANGE

SPECIFICATIONS

- Standard pan and tilt fixing of 101.6 PCD.
- Fixings included for telemetry receiver.
- Built in cable entry and exit points.
- Two metre sectional construction.
- Buried root or flange-mounted versions available.
- Standard heights available from 4 to 12 metres.
- Compatible with WEC adaptors, accessories and anti-climb brackets.

STANDARDS

Structural Steelwork:

BS EN 10210-1:1994,
BS EN 10210-2:1997

General Steelwork: BS1449:1991, BS1387:1985,
BS EN 10025:1993

Hot Dipped Galvanised:

BS EN ISO 1461:2009

Welding Procedures: Comply with BS EN 1011-2:2001

Fasteners: Grade 8.8

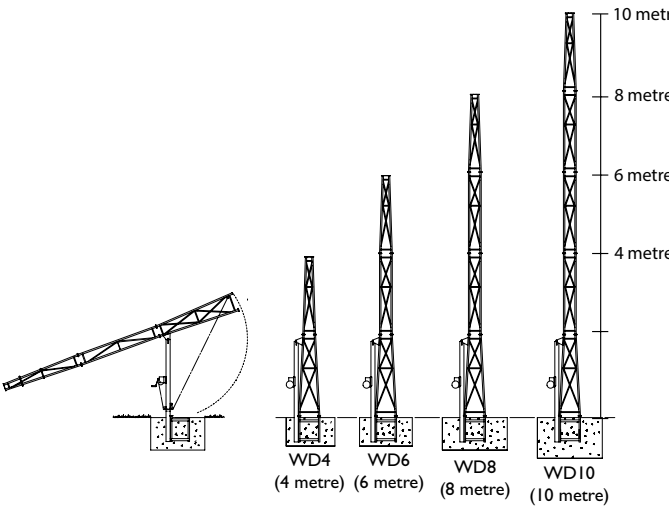
BS3692:2001, BS4190:2001,
DIN931, DIN934

Design Wind Loading:

In accordance with CP3 chapter V Pt 2 & BS 6399 Pt 2:1997

Paint Finishes: BS4800 and RAL colour range

TECHNICAL SPECIFICATION



MODEL REFERENCE

WD4 - 4 metre tower **WD6** - 6 metre tower
WD8 - 8 metre tower **WD10** - 10 metre tower
WD12 - 12 metre tower

TPT RANGE

SPECIFICATIONS

- Available in heights of 4, 6, 8 and 10 metres.
- Standard pan and tilt fixing of 101.6 PCD.
- Built in cable entry and exit points.
- Compatible with WEC adaptors, accessories and anti-climb brackets.

STANDARDS

Structural Steelwork:
BS EN 10210-1:1994,
BS EN 10210-2:1997

General Steelwork: BS1449:1991, BS1387:1985,
BS EN 10025:1993

Hot Dipped Galvanised:
BS EN ISO 1461:2009

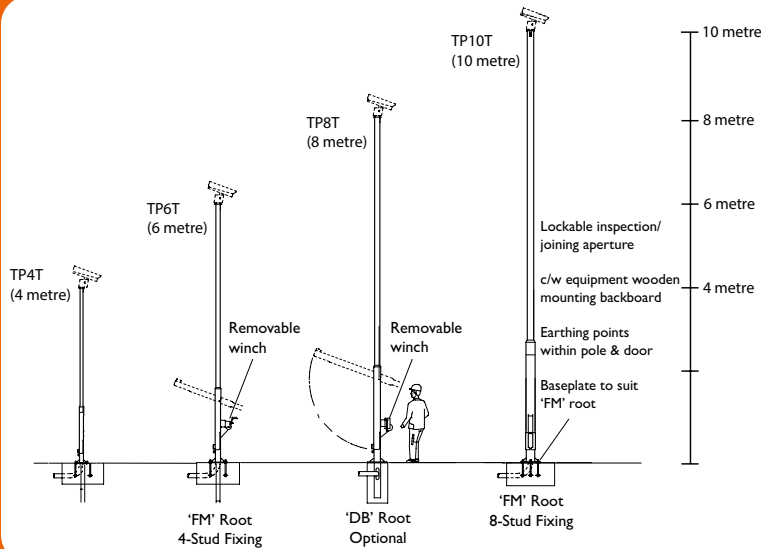
Welding Procedures:
Comply with
BS EN 1011-2:2001

Fasteners: Grade 8.8
BS3692:2001, BS4190:2001,
DIN931, DIN934

Design Wind Loading:
In accordance with CP3 chapter V Pt 2 & BS 6399 Pt2:1997

Paint Finishes: BS4800 and RAL colour range

TECHNICAL SPECIFICATION



MODEL REFERENCE

TP4T - 4 metre pole **TP6T** - 6 metre pole
TP8T - 8 metre pole **TP10T** - 10 metre pole



MTP RANGE

SPECIFICATIONS

- Standard heights 4, 6, and 8 metres. Other heights available on request.
- Standard 101.6mm PCD fixing can be modified on request.
- Built in cable entry and exit points.
- Compatible with WEC adaptors, accessories and anti-climb brackets.

STANDARDS

Structural Steelwork:
BS EN 10210-1:1994
BS EN 10210-2:1997

General Steelwork: BS1449:1991
BS1387:1985
BS EN 10025:1993

Hot Dipped Galvanised:
BS EN ISO 1461:2009

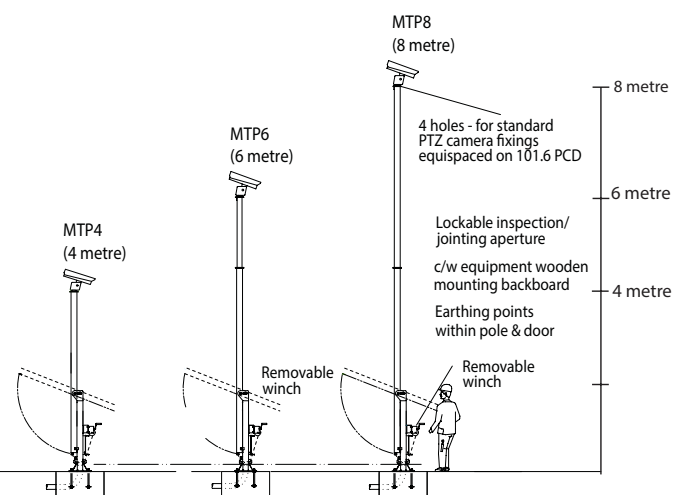
Welding Procedures: Comply with: BS EN 1011-2:2001

Fasteners: Grade 8.8 BS3692:2001, BS4190:2001
DIN931, DIN934

Design Wind Loading:
In accordance with CP3 chapter V Pt 2 & BS 6399 Pt 2:1997

Paint Finishes: BS4800 and RAL colour range

TECHNICAL SPECIFICATION



MODEL REFERENCE

MTP4 **MTP6** **MTP8**
4 metre pole 6 metre pole 8 metre pole



ETPS RANGE

SPECIFICATIONS

- Standard pan and tilt fixing of 101.6 PCD.
- Special dome mounting brackets available.
- Built in cable entry and exit points.
- Compatible with WEC adaptors, accessories and anti-climb brackets.
- 'Pocket' type roots available for restricted foundation locations.
- Other heights available on request.

STANDARDS

Structural Steelwork:
BS EN 10210-1:1994,
BS EN 10210-2:1997

General Steelwork: BS1449:1991, BS1387:1985,
BS EN 10025:1993

Hot Dipped Galvanised:
BS EN ISO 1461:2009

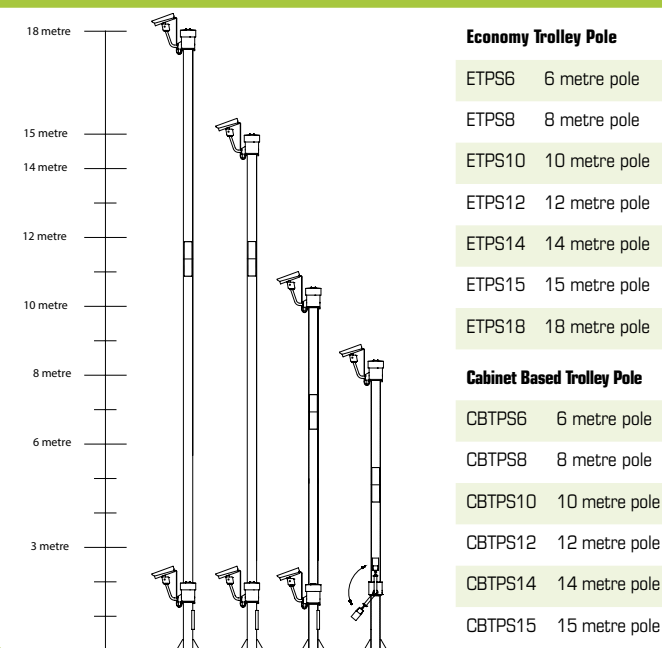
Welding Procedures: Comply with BS EN 1011-2:2001

Fasteners: Grade 8.8
BS3692:2001, BS4190:2001,
DIN931, DIN934

Design Wind Loading:
In accordance with CP3 chapter V Pt 2 & BS 6399 Pt 2:1997

Paint Finishes: BS4800 and RAL colour range

TECHNICAL SPECIFICATION



CDC TROLLEY POLE

* NEW PRODUCT *

SPECIFICATIONS

- Standard pan and tilt fixing of 101.6 PCD.
- Special dome mounting brackets available.
- Built in cable entry and exit points.
- Compatible with WEC adaptors, accessories and anti-climb brackets.
- 'Pocket' type roots available for restricted foundation locations.
- Other heights available on request.

STANDARDS

Structural Steelwork:
BS EN 10210-1:1994,
BS EN 10210-2:1997

General Steelwork: BS1449:1991, BS1387:1985,
BS EN 10025:1993

Hot Dipped Galvanised:
BS EN ISO 1461:2009

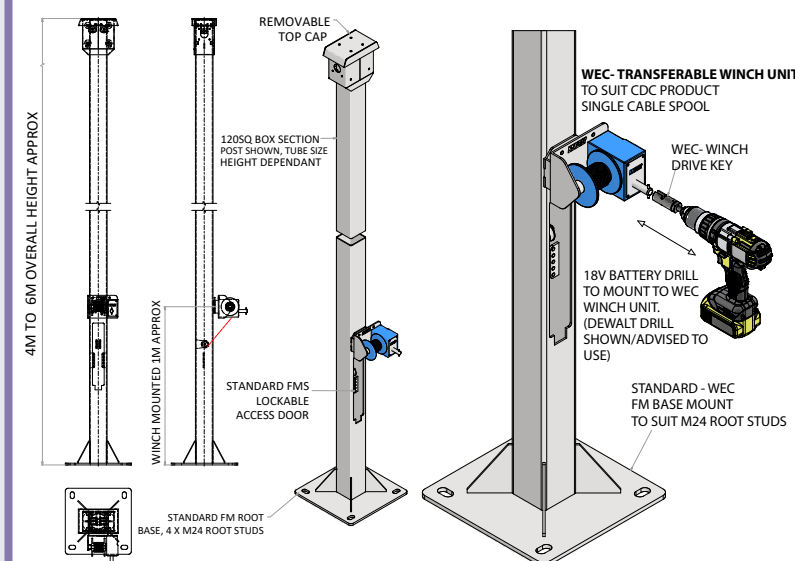
Welding Procedures: Comply with BS EN 1011-2:2001

Fasteners: Grade 8.8
BS3692:2001, BS4190:2001,
DIN931, DIN934

Design Wind Loading:
In accordance with CP3 chapter V Pt 2 & BS 6399 Pt 2:1997

Paint Finishes: BS4800 and RAL colour range

TECHNICAL SPECIFICATION



MODEL REFERENCE

CDC4	CDC6
4 metre pole	6 metre pole

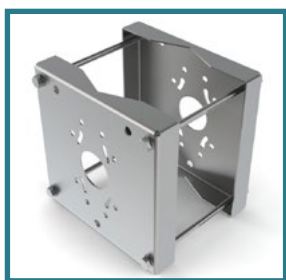
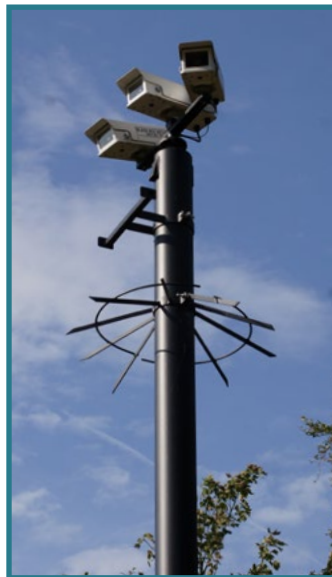
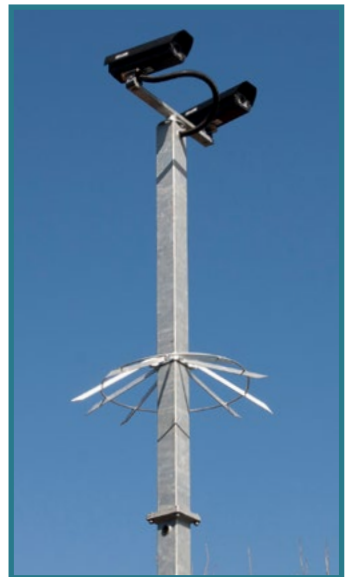
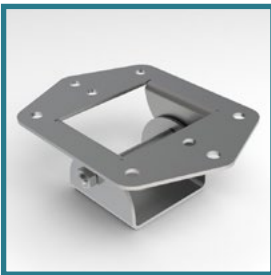
BRACKETS AND ACCESSORIES

CAMERA MOUNTS

The WEC fixed CCTV camera housing brackets and external pole clamp brackets allow up to 5 cameras to be attached to a pole.

They are robust heavy duty and weather-resistant brackets suitable for both internal and external use.

Camera mounts can be ordered in addition to your camera poles and towers.



POLE & TOWER ACCESSORIES

WEC manufactures a wide range of CCTV accessories compatible with our range of CCTV pole and tower export products.

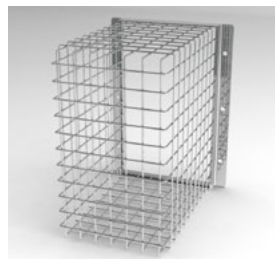
From pole top camera mounting to anti vandal accessories such as anti-climb brackets and security cages, we can offer a full package to suit your CCTV requirements.

ANTI-CLIMB BRACKETS

These can be fabricated to suit any of our poles or towers.

CAGES

WEC CCTV Cages are designed to protect your CCTV equipment and external lighting from vandalism, theft, and misuse. Fabricated from heavy duty galvanised steel rod, the cages can cope with the severest of abuse from vandalism or accidental damage.



BESPOKE AND DESIGN

BESPOKE PRODUCTS

JB AND WASHER BOTTLE BRACKET



WEC CCTV offer a vast range of bespoke products. Whatever your camera mounting requirement, we have the solution for you.

CONCRETE BLOCK



Our WEC Concrete Blocks make for easy and rapid deployment and can be adapted for any of our CCTV Poles, Columns or Cabinets. This makes them the ideal solution for when the use of temporary CCTV systems is required, e.g. motorway maintenance.

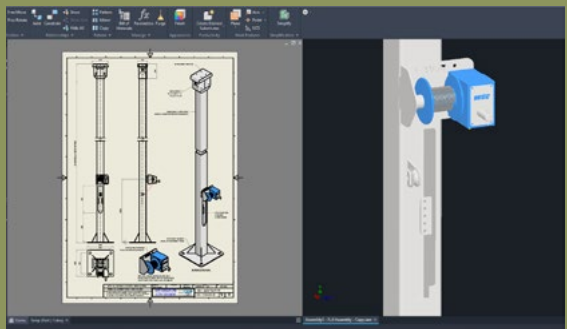
TELESCOPIC CAMERA POLE



Our Telescopic Camera Pole are available in heights from 4m-8m and is an ideal column for temporary security measures, such as building sites and outdoor events.

READER / INTERCOM POSTS

- Bespoke design service tailored to meet various requirements
- Mounting of card readers/intercoms for car & lorry heights
- Stainless steel options for offices/high profile areas
- Fabricated and designed to suit specific readers/intercoms



FULL DESIGN SERVICE AVAILABLE
INCLUDING BASE AND WIND
CALCULATIONS

WEC GROUP'S MAJOR EXPORT DESTINATIONS



**OUR PRODUCTS ARE SPECIFIED
BY THE LEADING OIL COMPANIES
IN THE UAE**

أرامكو السعودية
saudi aramco



bp



ExxonMobil



Recent Export Projects

- Dubai Metro Red Line Extension – Dubai
- The Myriad, Muscat - Residential And Retail Complex
- Container Terminal 4 of the Port Expansion project - Jebel Ali
- Museum of the Future – Dubai
- Ohanet gas development, Algeria
- Upper Zakum oil field project, Coast Abu Dhabi
- Al Zour Refinery Oil Refinery - Kuwait
- El Merk Central Processing Facility, Algeria
- Seif Palace Kuwait City
- Kauther depletion compression project, Oman
- Petro Rabigh Phase Oil Refinery II project, Jeddah Saudi Arabia
- Guggenheim Art Museum, Abu Dhabi
- Storage Dam Wilyat Al Hamra, Al Dakhliyah – Oman

**CONTACT THE TEAM NOW TO
DISCUSS YOUR CCTV COLUMN OR
BRACKETRY REQUIREMENTS**



[linkedin.com/company/wec-cctv](https://www.linkedin.com/company/wec-cctv)



[facebook.com/wecgrouppltd](https://www.facebook.com/wecgrouppltd)



[@wecgrouppltd](https://twitter.com/wecgrouppltd)

WEC
GROUP

Britannia House, Junction Street,
Darwen, Lancashire, BB3 2RB,
United Kingdom

Sales Direct: +44 (0)1254 700200

General Enquiries: +44 (0)1254 773718

Email: cctvexport@wecl.co.uk

Web: www.wec.uk.net

WEC CCTV is a trading division of WEC Group Ltd.

www.wec.uk.net