



## CCTV POLES & STRUCTURES, DESIGNED & MANUFACTURED IN THE UNITED KINGDOM

Supplying camera mounting solutions for over 40 years to the following sectors:

- Government
- Leisure & Tourism
- Oil & Gas
- Airports & Harbours
- Private Energy & Utilities
- Petrochemical



# intersec

Saeed Arena Hall, Stand S3-B43

# EXPORT 2022

# INTRODUCTION

WEC Group Limited understands the demand for specific CCTV installation expertise in the global markets. We have a dedicated Export Division understanding overseas installations and offering support from initial tender stage until project completion including supporting design documentation, full export documentation and shipping management.

Our range of CCTV Towers and associated bracketry has been specifically designed for use within the Petrochemical and Gas Industries. We have over 40 years of expertise in the design, production and manufacturing of CCTV mounting structures supplying to some of the world's leaders of CCTV Installations.

For all your CCTV Structure requirements please contact WEC's camera mounting division direct in the United Kingdom on: +44 (0)1254 700200 or email: [cctvexport@wecl.co.uk](mailto:cctvexport@wecl.co.uk)



## EXPORT

The WEC CCTV Export division specialises in the requirements and logistical processes for overseas installations.

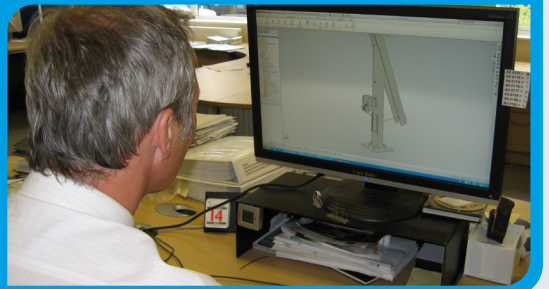
## LOGISTICS

Full logistic solutions available covering every region of the world by all modes of transport whether your requirements are by land, sea, air or multimodal. WEC offers a professional service from origin to the final destination.

## SERVICE

We strive to offer an unparalleled level of service from initial design to completion. Many of our customers have developed their portfolios with the assistance of our services and expertise.

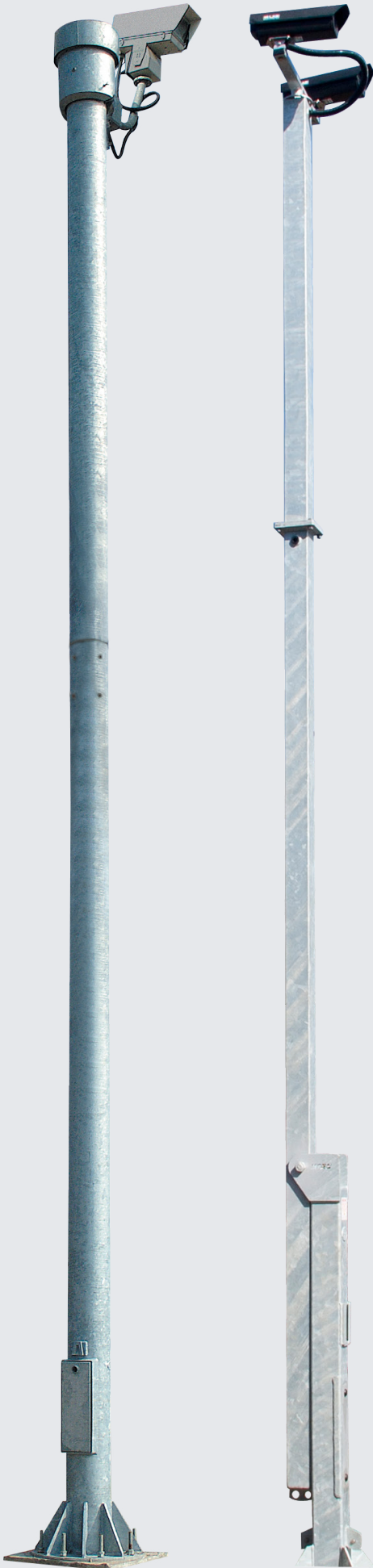
FULL DESIGN  
SERVICE AVAILABLE  
INCLUDING BASE AND  
WIND CALCULATIONS



FAST QUOTATION  
TURNAROUND WITH  
THE MAJORITY OF  
PRODUCTS AVAILABLE  
FROM STOCK



DESIGNED AND  
MANUFACTURED IN  
THE UNITED KINGDOM.



## WDT FEATURES

Tilt over triangular lattice construction tower providing excellent stability characteristics, vital for evidential video capture.

Available in 4, 6, 8 and 10 metre heights and supplied in 2 metre sections for ease of shipping, handling and installation.

Built in cable entry and exit points. Internal equipment mounting backboard complete with flush fitting door and twin compression locks for additional security.

Requires a removable winch unit to both install and maintain the tower. This also enables the operator to service the CCTV camera at ground level reducing the costs on multiple install personnel.

Full British Applicable Standards for the towers available upon request including drawings, installation methods, structural calculations and base foundations.

Compatible with all WEC associated bracketry.

## SPECIFICATIONS

- Standard 101.6mm PCD fixing can be modified on request.
- Bolt down version using a template and bolt set.
- Built in cable entry and exit points.
- Standard heights of 4, 6, 8 and 10 metres. Other heights available on request.
- Compatible with all WEC accessories.



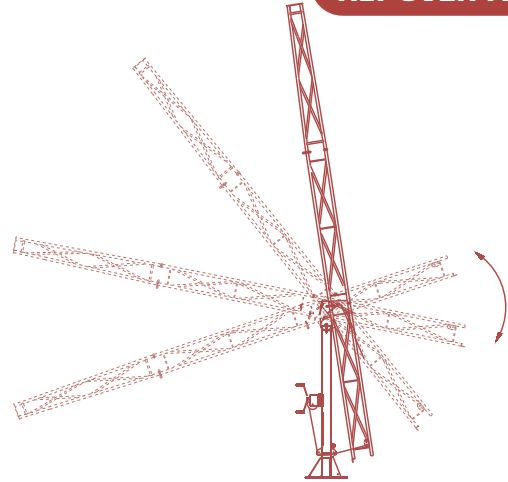


# Tilt-Over Towers WDT

## DESIGN FEATURES

- Cost effective solution for achieving desired camera height.
- Triangular Lattice Construction provides excellent stability characteristics.
- Ideal for exposed environments where stability is of paramount importance.
- Tilt over facility enables camera servicing at ground level by single engineer.
- Stocked in heights up to 10 metres.
- Modular Construction in 2 metre sections allows for easy erection and extension if required.
- Transferable/removable winch unit ensures installations are secure and reduces installation cost.
- Hot dipped galvanised to ISO1461 for maximum protection against even the harshest environments.
- Towers can be customised to suit customers' specific requirements.
- Flush fitting door (optional)
- Fully cable managed (optional)

## TILT OVER FACILITY



## STANDARDS

### Structural Steelwork:

BS EN 10210-1:1994,  
BS EN 10210-2:1997

### General Steelwork:

BS1449:1991,  
BS1387:1985,  
BS EN 10025:1993

### Hot Dipped Galvanised:

BS EN ISO 1461:2009

**Welding Procedures:** Comply  
with BS EN 1011-2:2001

### Fasteners: Grade 8.8

BS3692:2001,  
BS4190:2001,  
DIN931, DIN934

**Design Wind Loading:** In  
accordance with CP3 chapter  
V Pt 2 & BS 6399 Pt 2:1997

## MODEL REFERENCE

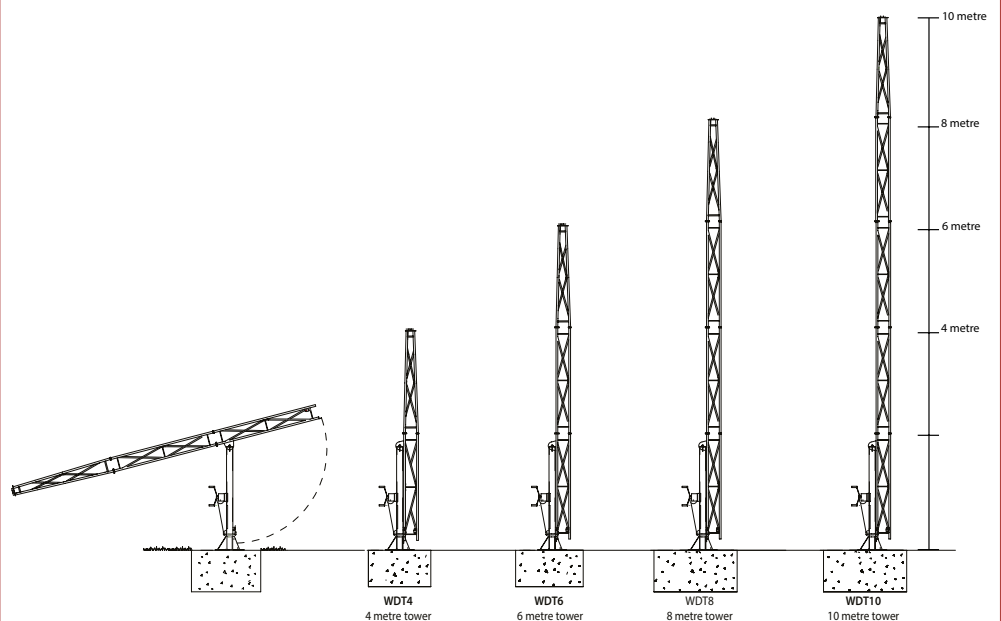
**WDT4** - 4 metre tower

**WDT6** - 6 metre tower

**WDT8** - 8 metre tower

**WDT10** - 10 metre tower

## TECHNICAL SPECIFICATION



## WD FEATURES

Tilt over triangular lattice construction tower providing excellent stability characteristics, vital for evidential video capture.

Available in 4, 6, 8, 10 and 12 metre heights. Up to 20 metre fixed versions of the tower are also available.

Supplied in sections for ease of shipping, handling and installation.

Built in cable entry and exit points.

Requires a removable winch unit to both install and maintain the tower, this also enables the operator to service the CCTV camera at ground level reducing the costs on multiple install personnel.

Full British Applicable Standards for the towers available upon request including drawings, installation methods, structural calculations and base foundations.

Compatible with all WEC associated bracketry.

## SPECIFICATIONS

- Standard pan and tilt fixing of 101.6 PCD.
- Fixings included for telemetry receiver.
- Built in cable entry and exit points.
- Two metre sectional construction.
- Buried root or flange-mounted versions available.
- Standard heights available from 4 to 12 metres.
- Compatible with WEC adaptors, accessories and anti-climbs.





# Tilt-Over Lattice Tower WD

## DESIGN FEATURES

A cost-effective solution for achieving desired camera height. The tilt-over tower enables camera maintenance at ground level.

An ideal installation where Health & Safety requirements are paramount. Off the shelf heights up to 12 metres.

Rigid triangular lattice structure ensures excellent stability characteristics.

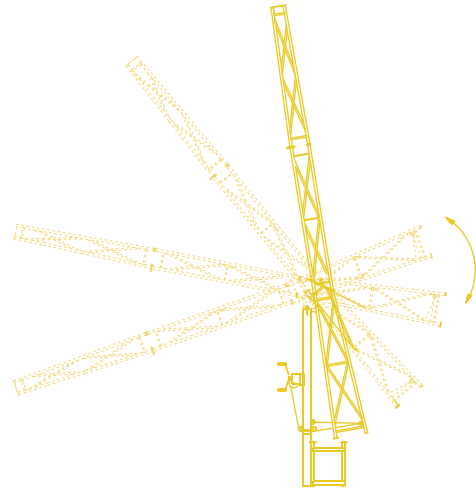
Modular construction for ease of transportation and erection.

A transferable winch unit allows multi-site servicing and leaves installation tamper proof.

Hot dipped galvanised finish for maximum weather protection and low maintenance requirements.

Custom modifications and towers tailored to the customer's requirements.

## TILT OVER FACILITY



## MODEL REFERENCE

- WD4** - 4 metre tower    **WD6** - 6 metre tower
- WD8** - 8 metre tower    **WD10** - 10 metre tower
- WD12** - 12 metre tower

## STANDARDS

**Structural Steelwork:**  
BS EN 10210-1:1994,  
BS EN 10210-2:1997

**General Steelwork:**  
BS1449:1991,  
BS1387:1985,  
BS EN 10025:1993

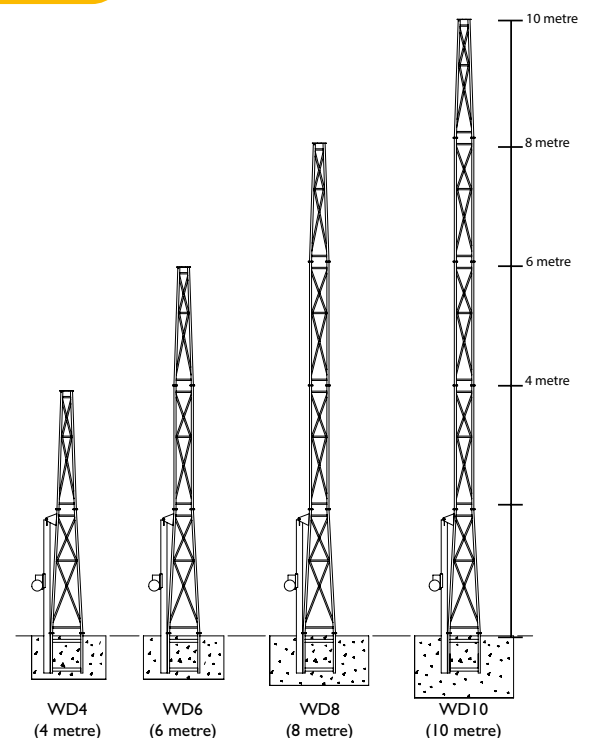
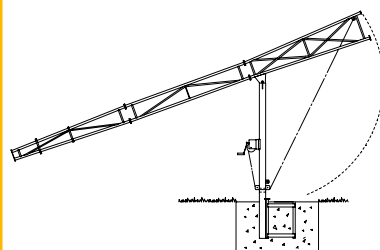
**Hot Dipped Galvanised:**  
BS EN ISO 1461:2009

**Welding Procedures:** Comply  
with BS EN 1011-2:2001

**Fasteners:** Grade 8.8  
BS3692:2001,  
BS4190:2001,  
DIN931, DIN934

**Design Wind Loading:** In  
accordance with CP3 chapter  
V Pt 2 & BS 6399 Pt 2:1997

## TECHNICAL SPECIFICATION



## TPT FEATURES

The TPT range is both solid and practical and can be serviced at ground level by a single engineer.

An ideal installation where Health & Safety requirements are paramount, its rigid structure ensures excellent stability characteristics.

A transferable winch unit allows multi-site servicing and leaves installation tamper proof.

The TPT is a desirable column where aesthetics are of importance and it offers a totally concealed cable management facility.

Hot dipped galvanised to ISO1461 for maximum protection against even the harshest environments and low maintenance requirements.

Flange-mounted 'FM' type root and 'Pocket' type roots available for restricted foundations.

Custom and bespoke versions tailored to the customer's requirements.

## SPECIFICATIONS

- Available in heights of 4, 6, 8 and 10 metres.
- Standard pan and tilt fixing of 101.6 PCD.
- Built in cable entry and exit points.
- Compatible with WEC adaptors and accessories.







# Tilt-Over Tubular Columns TPT

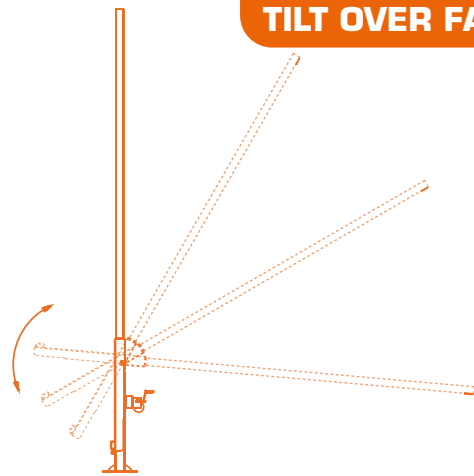
## DESIGN FEATURES

The TPT range provides the ultimate in attractive, low maintenance, engineer friendly camera mounting solutions.

This CCTV column offers ease of installation, with the major benefit of safe ground level servicing. The TPT range is a robust version of the tilting column, featuring a square section lower post, with a tubular upper section.

Suitable for mounting in low risk public areas, the TPT range offers many practical engineering benefits, along with being unobtrusive and aesthetically pleasing.

## TILT OVER FACILITY



## MODEL REFERENCE

**TP4T** - 4 metre pole      **TP6T** - 6 metre pole  
**TP8T** - 8 metre pole      **TP10T** - 10 metre pole

## STANDARDS

**Structural Steelwork:**  
BS EN 10210-1:1994,  
BS EN 10210-2:1997

**General Steelwork:**  
BS1449:1991,  
BS1387:1985,  
BS EN 10025:1993

**Hot Dipped Galvanised:**  
BS EN ISO 1461:2009

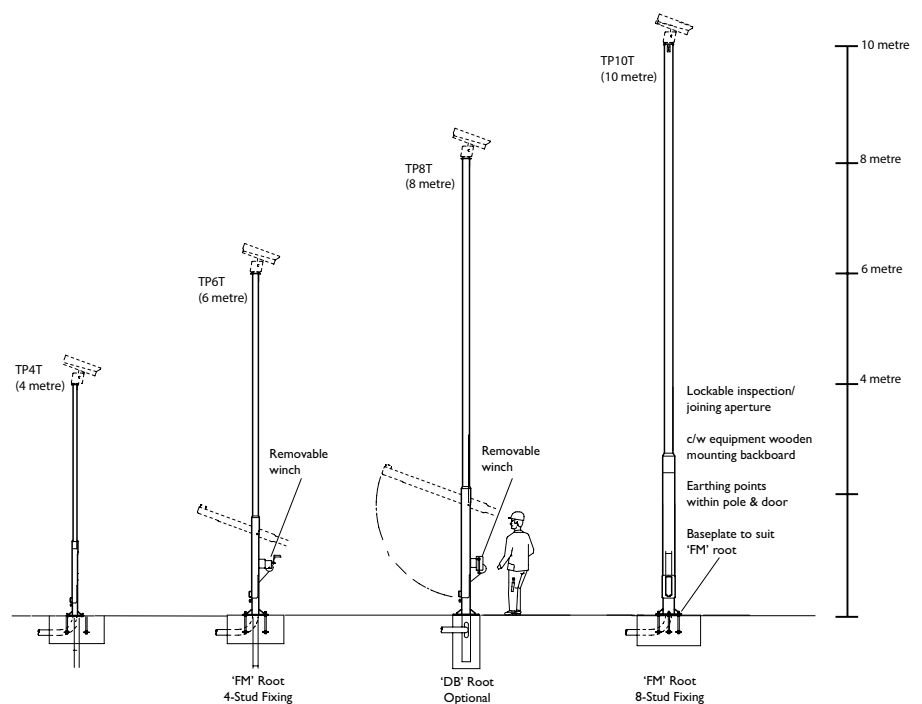
**Welding Procedures:**  
Comply with  
BS EN 1011-2:2001

**Fasteners:** Grade 8.8  
BS3692:2001,  
BS4190:2001,  
DIN931, DIN934

**Design Wind Loading:** In  
accordance with CP3  
chapter V Pt 2 & BS 6399  
Pt 2:1997

**Paint Finishes:** BS4800 and  
RAL colour range

## TECHNICAL SPECIFICATION



## MTP FEATURES

Provides stable structure for all camera types ensuring minimal camera movement, vital for evidential video capture.

Tilt over square sectional CCTV tower supplied in heights of 4, 6 and 8 metres. Supplied in sections for ease of shipping, handling and installation.

Ideal for restricted access locations as they can easily be transported from drop off point to final installation location.

Totally concealed cable management avoiding any risk of vandalism to the power or data cables.

Internal equipment mounting backboard complete with flush fitting door with twin compression locks for additional security.

Requires a removable winch unit to both install and maintain the tower, this also enables the operator to service the CCTV camera at ground level reducing the costs on multiple install personnel.

## SPECIFICATIONS

- Standard heights 4, 6, and 8 metres. Other heights available on request.
- Standard 101.6mm PCD fixing can be modified on request.
- Built in cable entry and exit points.
- Compatible with all WEC accessories.



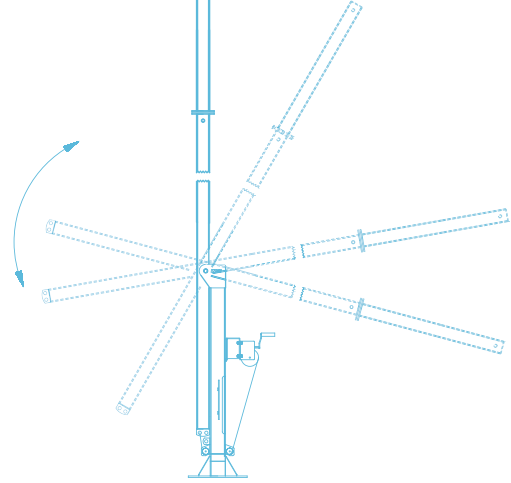


# Modular Tilt-Over Square Columns MTP

## DESIGN FEATURES

- Cost effective solution for achieving desired camera height.
- Modular construction makes this unit ideal for inaccessible areas.
- Stable structure for all camera types.
- Tilt over facility enables camera servicing at ground level by a single engineer.
- Lockable access door is provided as standard.
- Hot dipped galvanised to ISO1461 for maximum protection against even the harshest environments.
- Fully concealed cable pathway.

## TILT OVER FACILITY



## STANDARDS

### Structural Steelwork:

BS EN 10210-1:1994  
BS EN 10210-2:1997

### General Steelwork:

BS1449:1991  
BS1387:1985  
BS EN 10025:1993

### Hot Dipped Galvanised:

BS EN ISO 1461:2009

**Welding Procedures:** Comply with: BS EN 1011-2:2001

### Fasteners: Grade

8.8 BS3692:2001,  
BS4190:2001  
DIN931, DIN934

### Design Wind Loading:

In accordance with CP3 chapter V Pt 2 & BS 6399 Pt 2:1997

**Paint Finishes:** BS4800 and RAL colour range

## MODEL REFERENCE

### MTP4

4 metre pole

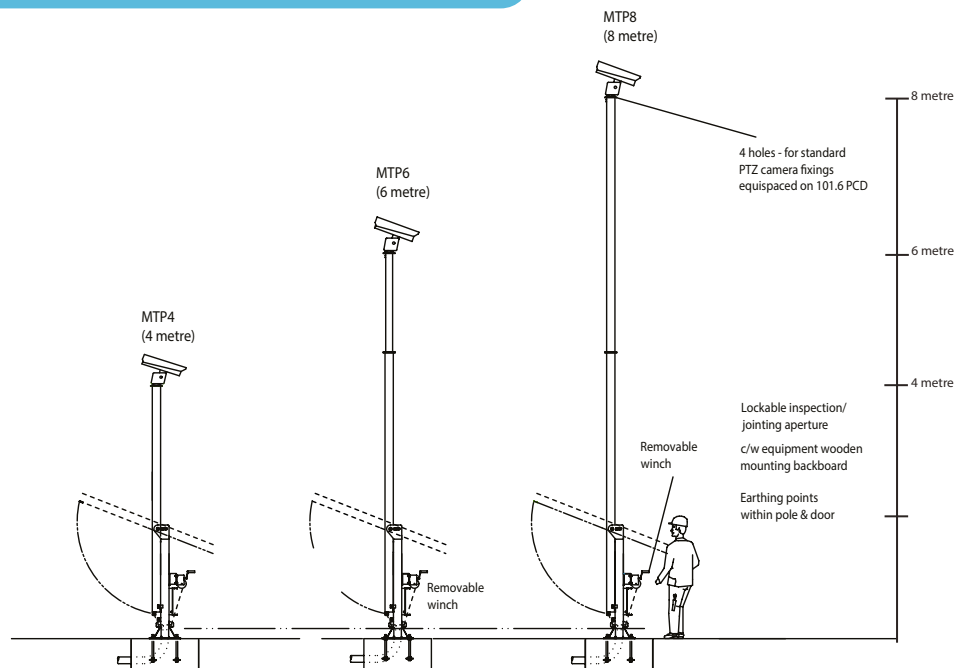
### MTP6

6 metre pole

### MTP8

8 metre pole

## TECHNICAL SPECIFICATION



## ETPS FEATURES

Available in heights up to 15 metres and supplied in two parts for ease of shipping, handling and installation.

Cabinet base and slim line base options available. All camera maintenance carried out at ground level, eliminating the use of mechanical lifts for servicing purposes.

Totally concealed cable management avoiding any risk of vandalism to the power or data cables. Ideally suited for CCTV installations where Health and Safety requirements are paramount.

Integral lockable cabinet with equipment mounting backboard. Numerous options are available for the doors from compression locks to high risk vault doors.

Various built in or transferable winch units are available across the range depending on required height.

Full British Applicable Standards for the towers available upon request including drawings, installation methods, structural calculations and base foundations.

## SPECIFICATIONS

- Standard pan and tilt fixing of 101.6 PCD.
- Special dome mounting brackets available.
- Built in cable entry and exit points.
- Compatible with WEC adaptors, accessories and anti-climbs.
- 'Pocket' type roots available for restricted foundation locations.
- Other heights available on request.



Supplied in two parts for ease of shipping





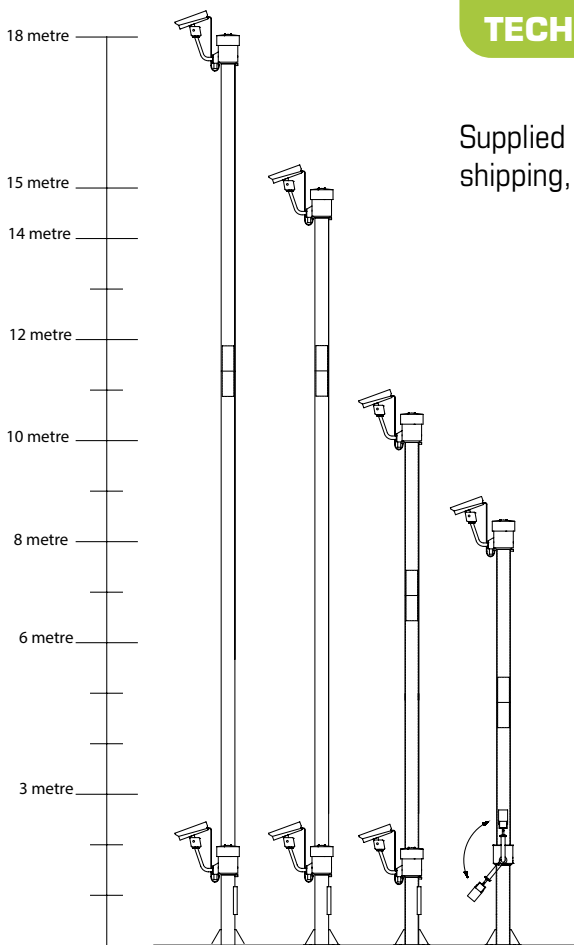
# Split Camera Trolley Pole ETPS

## DESIGN FEATURES

- An ideal column for urban and traffic CCTV schemes.
- Camera maintenance carried out at ground level.
- The camera head rotates through 180 degrees for servicing purposes.
- Various built in and transferable winch options.
- In-built carriage failsafe braking mechanism.
- Excellent stability characteristics ensures minimal camera movement.
- Recommended for installation in high profile places.
- Suitable for all public access areas.
- Camera carriage unit has a self clamping mechanism to minimise deflection when in its working position.
- Totally concealed cable management facility.
- High security door option for high risk areas.
- Hot dipped galvanised finish for maximum weather protection and low maintenance requirements.
- Custom and bespoke versions tailored to the customer's requirements.
- Eliminates the use of mechanical lifts for servicing purposes.

## TECHNICAL SPECIFICATION

Supplied in sections for ease of shipping, handling and installation



## MODEL REFERENCE

### Economy Trolley Pole

ETPS6	6 metre pole
ETPS8	8 metre pole
ETPS10	10 metre pole
ETPS12	12 metre pole
ETPS14	14 metre pole
ETPS15	15 metre pole
ETPS18	18 metre pole

### Cabinet Based Trolley Pole

CBTPS6	6 metre pole
CBTPS8	8 metre pole
CBTPS10	10 metre pole
CBTPS12	12 metre pole
CBTPS14	14 metre pole
CBTPS15	15 metre pole
CBTPS18	18 metre pole

## STANDARDS

### Structural Steelwork:

BS EN 10210-1:1994,  
BS EN 10210-2:1997

### General Steelwork:

BS1449:1991,  
BS1387:1985,  
BS EN 10025:1993

### Hot Dipped Galvanised:

BS EN ISO 1461:2009

### Welding Procedures:

Comply with BS EN 1011-2:2001

### Fasteners:

Grade 8.8  
BS3692:2001,  
BS4190:2001,  
DIN931, DIN934

### Design Wind Loading:

In accordance with CP3 chapter  
V Pt 2 & BS 6399 Pt 2:1997

## POLE & TOWER ACCESSORIES

WEC manufactures a wide range of CCTV accessories compatible with our range of CCTV pole and tower export products.

From pole top camera mounting to anti vandal accessories such as anti climb guards and security cages, we can offer a full package to suit your CCTV requirements.

Our accessories can be ordered in addition to your pole or tower shipment.

## ANTI CLIMB GUARDS

Our anti climb guards can be added to your pole or tower order.



Anti Climb Guard  
Circular Columns



Anti Climb Guard  
Square Columns



Anti Climb Guard  
WD & WDT Tower



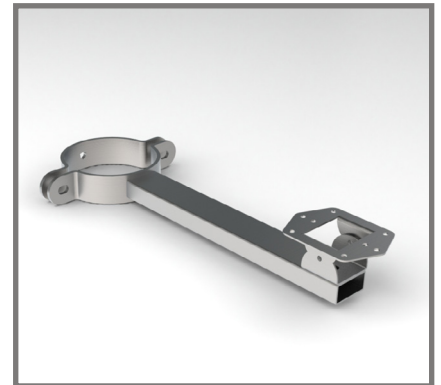
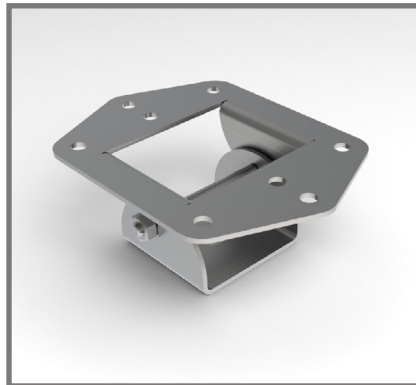
# CCTV Pole & Tower Accessories

## CAMERA MOUNTS

The WEC fixed CCTV camera housing brackets and external pole clamp brackets allow up to 5 cameras to be attached to a pole.

They are robust heavy duty and weather-resistant brackets suitable for both internal and external use.

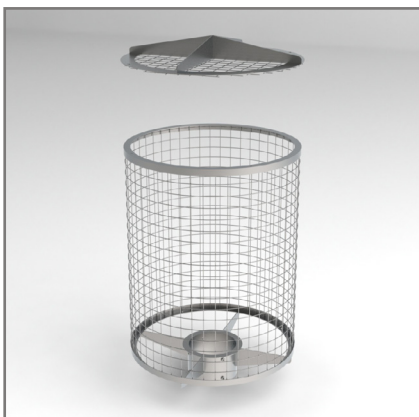
Camera mounts can be ordered in addition to your camera poles and towers.



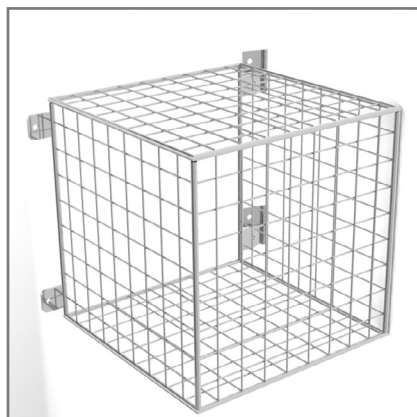
## CAGES

WEC CCTV Cages are designed to protect your CCTV equipment and external lighting from vandalism, theft, and misuse. Fabricated from heavy duty galvanised steel rod, the cages can cope with the severest of abuse from vandalism or accidental damage.

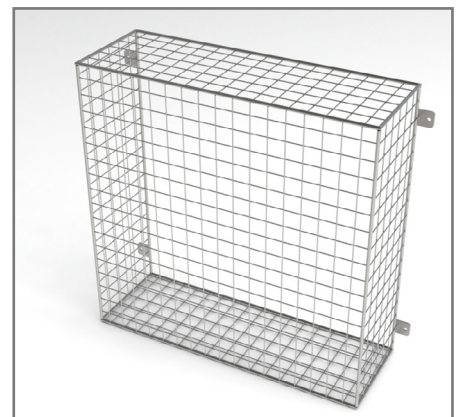
Cages can be ordered in addition to your camera poles and towers.



Pole top cage for PTZ cameras



Wall mounted CCTV cage



Bespoke security window grilles

# WEC GROUP'S MAJOR EXPORT DESTINATIONS



**OUR PRODUCTS ARE SPECIFIED  
BY THE LEADING OIL COMPANIES  
IN THE UAE**



## Latest Export Projects

- Dubai Metro Red Line Extension – Dubai
- The Myriad, Muscat - Residential And Retail Complex
- Container Terminal 4 of the Port Expansion project - Jebel Ali
- Museum of the Future – Dubai
- Ohanet gas development, Algeria
- Upper Zakum oil field project, Coast Abu Dhabi
- Al Zour Refinery Oil Refinery - Kuwait
- El Merk Central Processing Facility, Algeria
- Seif Palace Kuwait City
- Kauther depletion compression project, Oman
- Petro Rabigh Phase Oil Refinery II project, Jeddah Saudi Arabia
- Guggenheim Art Museum, Abu Dhabi
- Storage Dam Wilyat Al Hamra, Al Dakhliyah – Oman

**CONTACT THE TEAM NOW TO  
DISCUSS YOUR CCTV COLUMN OR  
BRACKETRY REQUIREMENTS**



[linkedin.com/company/wec-group-ltd](https://www.linkedin.com/company/wec-group-ltd)



[facebook.com/wecgroupLtd](https://www.facebook.com/wecgroupLtd)



[@wecgroupLtd](https://twitter.com/wecgroupLtd)

**WEC**  
**GROUP**

Britannia House, Junction Street,  
Darwen, Lancashire, BB3 2RB,  
United Kingdom

**Sales Direct: +44 (0)1254 700200**

**General Enquiries: +44 (0)1254 773718**

Email: [cctvexport@wecl.co.uk](mailto:cctvexport@wecl.co.uk)

**Web: [www.wec.uk.net](http://www.wec.uk.net)**

WEC CCTV is a trading division of WEC Group Ltd.

[www.wec.uk.net](http://www.wec.uk.net)